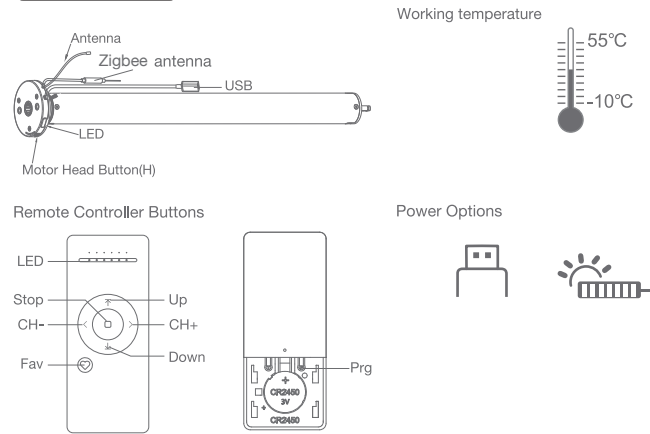


# Stealth Rechargeable Programming Instructions

## 01 Product Info



## 02 Caution!



- 1.This product is for indoor use only, do not use outdoor or in humid environments.
- 2.This motor has a built-in rechargeable Li-Ion battery pack with integrated charge management. Max input voltage: 5V/2A.
- 3.Please charge it before using for the first time, make sure it is fully charged before first use
- 4.When the battery voltage is low, LED will flicker 8 times to give a low-voltage alarm when motor starts.
- 5.The motor will jog in operation, please do not proceed to the next step until it is complete.
- 6.During operation, the effective interval of the transmitter button operation is 10 seconds. If there is no effective transmitter operation for more than 10 seconds, it will automatically exit the current mode.
- 7.The motor can be paired with max 10 controllers.
- 8.Please do not use motor when charging.
- 9.Upper&Lower limits cannot be set at the same position, limits will be saved even in power off.
- 10.The motor will run constantly for 6 mins if limits have not been set and no other operation is performed.
- 11.Do not lift the motor by grabbing the wire or antenna.

- 12.As a standard, motors are shipped in factory default mode without limits set.
- 13.Channel "0" cannot be programmed on a multi channel remote. It is intended to be a master channel for all motors.

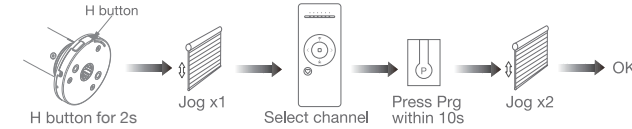
## 03 Instructions

Motor head button (H) functions

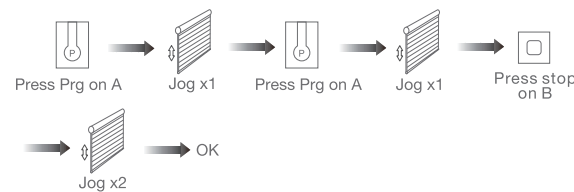
Functions	Operation	Jogging time	LED lamp flickers	Note
Control the UP/STOP/DOWN of the Shade	Short press	/	/	Can only operate after the limits are set and motor is not in sleep mode
Adding/Removing Controller	Hold for 2s	Jog x1	Flicker x1	Operation needs be done within 10s
Zigbee Connecting	Hold for 6s	Jog x2	Flicker x2	Entering Zigbee connection mode
Direction Reverse	Hold for 10s	Jog x3	Flicker x3	All settings saved after direction reversed
Reset	Hold for 16s	Jog x4	Flicker x4	All settings deleted

### a.Pairing Motor with Controller

Way 1: Power on, add a new controller

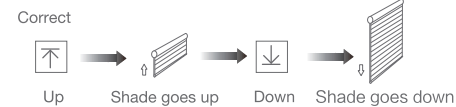


Way 2: Power on, add controller B via pre-existing controller A

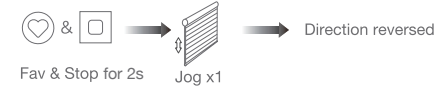


Note: Pairing can not be done under group channel or 0 channel.

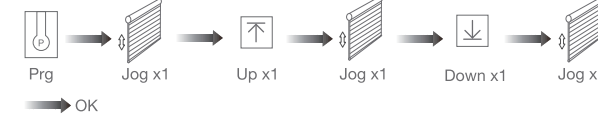
### b.Direction Reverse



If the limits are not set, and direction goes opposite.



If limits are set and direction goes opposite.



Note: Do reverse the direction when it goes opposite.

### c.Upper&Lower Limits Setting



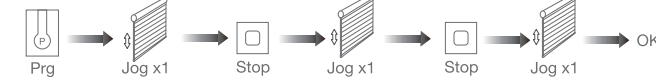
Note: Upper&Lower limits cannot be set at the same point.

Before limits set, the motor will run in one-touch mode by pressing Up or Down, Hold Up or Down for 2s, motor runs in constant-touch mode. Once limits set, press Up or Down, motor runs in constant-touch mode.



### d.One-touch/Constant-touch Mode

Constant-touch ----->One-touch



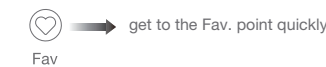
Same operation can toggle from one-touch to constant -touch mode.

Note: When motor is in one-touch mode, hold Up or Down for more than 2s, it will run in constant-touch mode.

### e.Setting and Cancelling Favorite Position



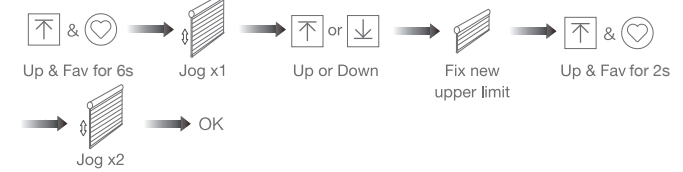
### f.Hot key to the Fav. Position



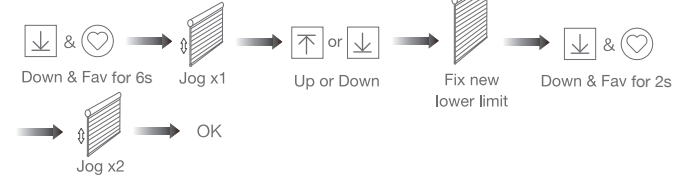
Note: The Fav.position setting only can be done after upper&lower limits set.

### g.Adjusting Upper & Lower Limits

Adjust Upper limit

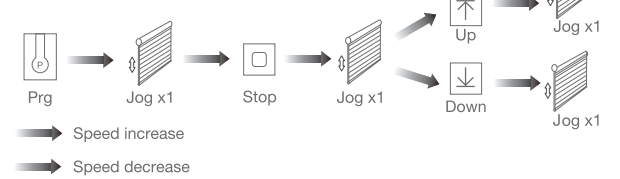


Adjust Lower limit



Note: The operation should be done within 4mins.

### h.Adjusting Motor Speed



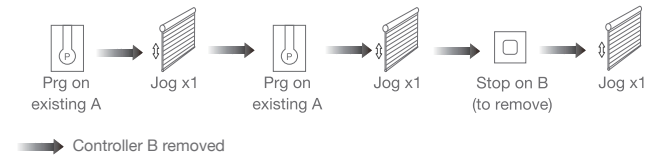
Note: If motor doesn't jog, the max/min speed has already been reached. There are 3 adjustable speeds.

### i.Removing Controllers

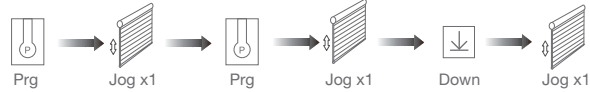
Remove a single controller



Remove controller B via pre-existing controller A



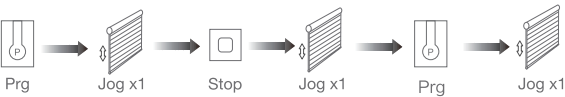
Remove all controllers:



➡ All controllers removed

Note: All the settings are saved even controllers removed(limits set are saved).  
Controller A/B are already paired to motor.

#### j.Cancelling Limits



➡ Limits cancelled

Note: It is forbidden to run the motor if installed into the shade without limits.  
Limits should be set immediately to protect the shade.

#### k.Zigbee Connecting

##### \*Connection requirement

- Make sure the phone is connected to the Wi-Fi network.
- The Tuya Zigbee gateway device needs to be added to the "Smart Life" APP first, please refer to its manual for details.

##### ① Download App

- Search for "Smart Life" in the app store or scan the QR code

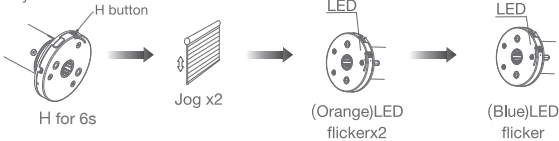


- Complete account registration and login to the app

##### ② Add Device

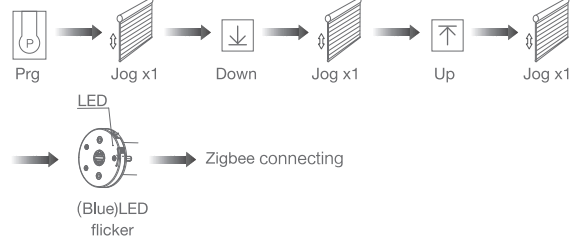
- Make sure the phone is connected to the Wi-Fi network
- Make sure the Tuya Zigbee gateway device is connected to "Smart Life" App
- Make the motor is ready to be connected to Zigbee by following steps:

##### Way 1

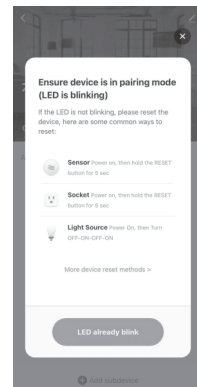
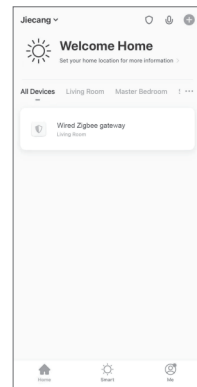


➡ Zigbee connecting

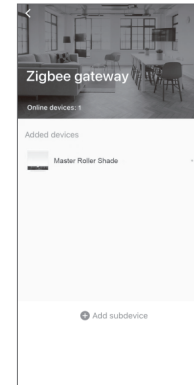
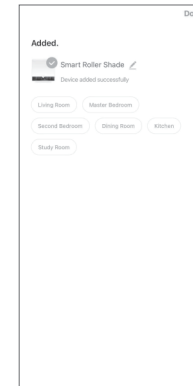
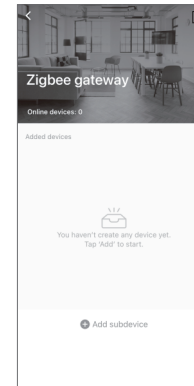
##### Way 2:



- Find the added Tuya Zigbee gateway on the "Smart Life" App, click "+" to add a sub-device, and then click "LED already blink", the APP will automatically search for motor device



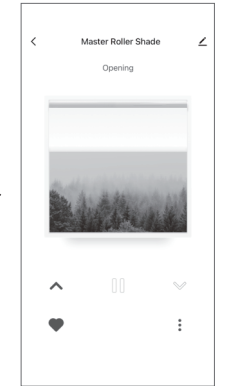
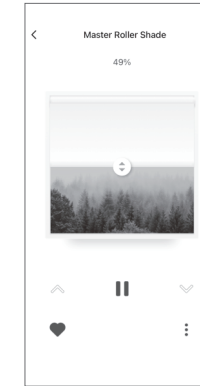
- After adding successfully, click "✎" to modify the device name



- After the motor device is added successfully, the LED on motor head will be on for 10s and then go off.



- Now the motor can be controlled by App from anywhere, anytime



## 04 Troubleshooting

Fault	Cause	Solution
Motor does not work	1.Controller not paired 2.Motor inactive 3.Low battery	1.Add controller 2.Hold H button for 2s to activate motor 3.Charging
Motor stops suddenly	1.Upper & Lower limit set incorrectly 2.Shade exceed rated load 3.Low battery	1.Re-set Upper & Lower limits 2.Adjust load 3.Charging
LED flickers 8 times on motor head when motor starts	Low battery	Charging